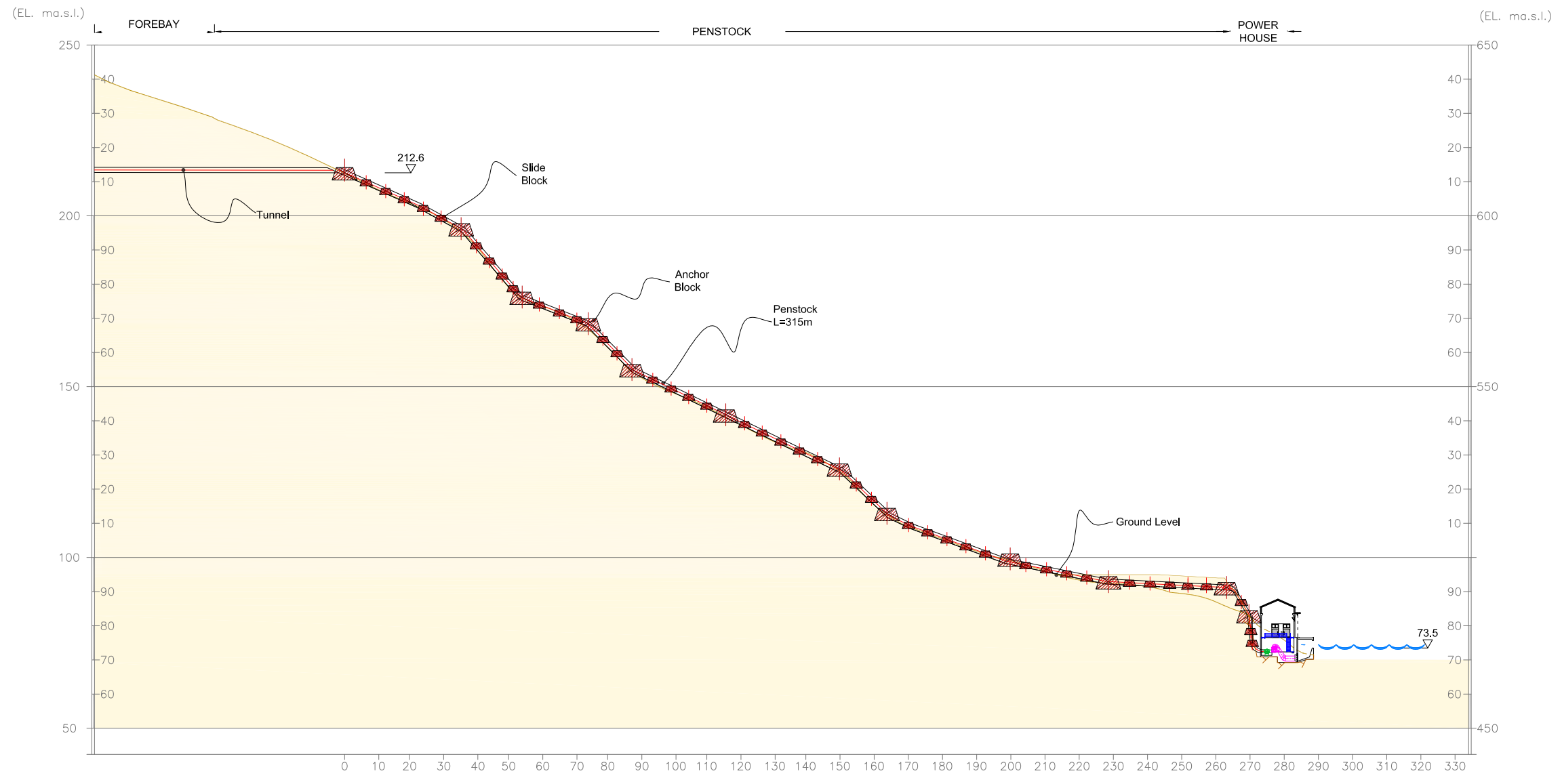


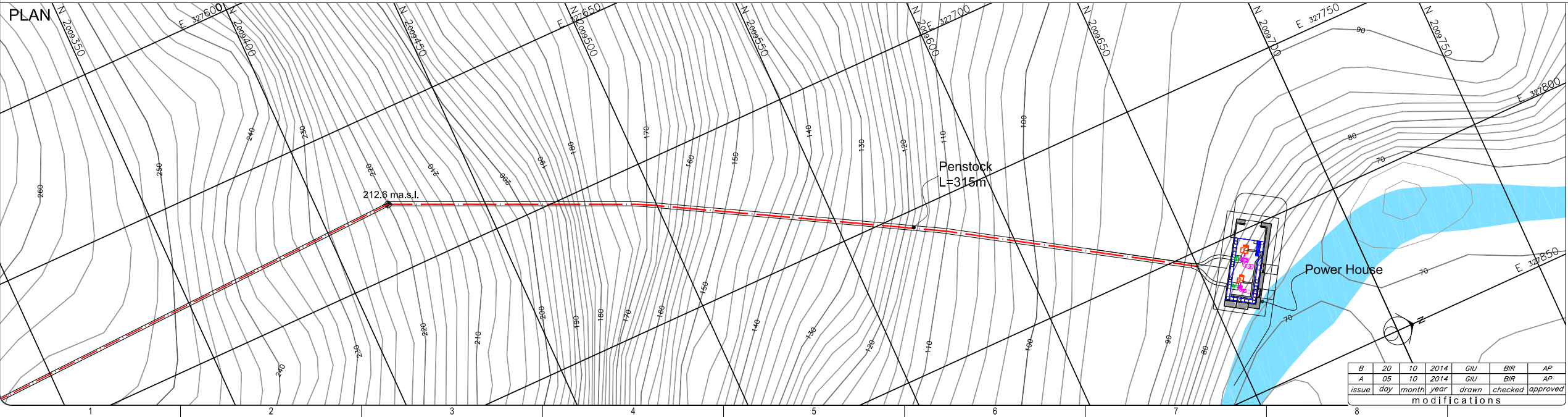
THIS DRAWING IS PROPERTY OF SP AND MAY NOT BE REPRODUCED OR RELEASED TO THIRD PARTIES WITHOUT WRITTEN AUTHORIZATION

Z:\JAMAICA FIVE hpp\200 - FEASIBILITY\270 PENSTOCK\DWG\270 PSK D SP 301 B.SPANISH RIVER_PENSTOCK_Plan and Profile_141020.dwg gju.sp - Roma 20/OCT/2014 16:58:43

PROFILE



Ground El (m.a.s.l.)	228.4	228.4	224.4	222.1	219.7	217.2	214.6	211.9	209.4	206.7	204.4	202.0	199.3	196.3	195.4	191.4	186.9	181.3	176.0	174.1	173.9	171.1	169.7	169.0	166.3	166.8	164.0	162.9	159.8	156.8	155.4	154.4	152.1	150.8	149.5	148.4	147.0	146.5	144.5	144.0	141.1	138.1	136.1	135.5	133.9	133.1	131.3	128.8	128.2	125.4	125.4	121.4	120.8	117.2	116.1	112.9	112.5	109.5	109.1	107.4	107.0	105.3	105.0	103.3	102.9	101.2	100.9	99.2	99.2	97.8	97.8	96.6	95.9	95.3	94.2	94.1	93.0	92.5	92.1	92.1	91.4	91.4	89.8	89.8	89.2	89.2	88.0	88.0	81.2	82.8	84.0	84.0	81.8	81.8
Penstock Axis El (m.a.s.l.)	229.6	227.1	224.6	222.0	219.5	217.0	214.6	212.2	209.4	207.3	204.9	202.3	199.5	196.3	195.4	191.4	186.9	181.3	176.0	174.1	173.9	171.1	169.7	169.0	166.3	166.8	164.0	162.9	159.8	156.8	155.4	154.4	152.1	150.8	149.5	148.4	147.0	146.5	144.5	144.0	141.1	138.1	136.6	135.5	133.9	133.1	131.3	128.8	128.2	125.6	125.4	121.4	120.8	117.2	116.1	112.9	112.5	109.5	109.1	107.4	107.0	105.3	105.0	103.3	102.9	101.2	100.9	99.2	99.2	97.8	97.8	96.6	95.9	95.3	94.2	94.1	93.0	92.5	92.1	92.1	91.4	91.4	89.8	89.8	89.2	89.2	88.0	88.0	81.2	82.8	84.0	84.0	81.8	81.8



NOTES

(1) - Topography data based on the NLA 12'500 TOPOMAPS INDEX 104B, 104D, 114A, 114C.

PROJECTION: UTM ZONE 18N
DATUM: WGS 1984

Contours vertical: MINOR 25/50 feet
MAJOR 100 feet

Scale: 1:1500 (A3 size)

beneficiary: Government of Jamaica
project: Ministry of Science, Technology, Energy and Mining

designer: JAM FIVE hpp
SP studio ing. g. pietrangeli consulting engineers

design: Phase 2 - Feasibility

title: 3 - SPANISH RIVER
270 = PENSTOCK

Plan and Profile

B	20	10	2014	GIU	BIR	AP
A	05	10	2014	GIU	BIR	AP
issue	day	month	year	drawn	checked	approved

270 PSK DSP 301 B 20 Oct 2014

section-kind works-type-office-proj-serial-nr-rev-date