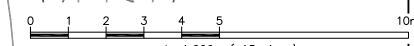
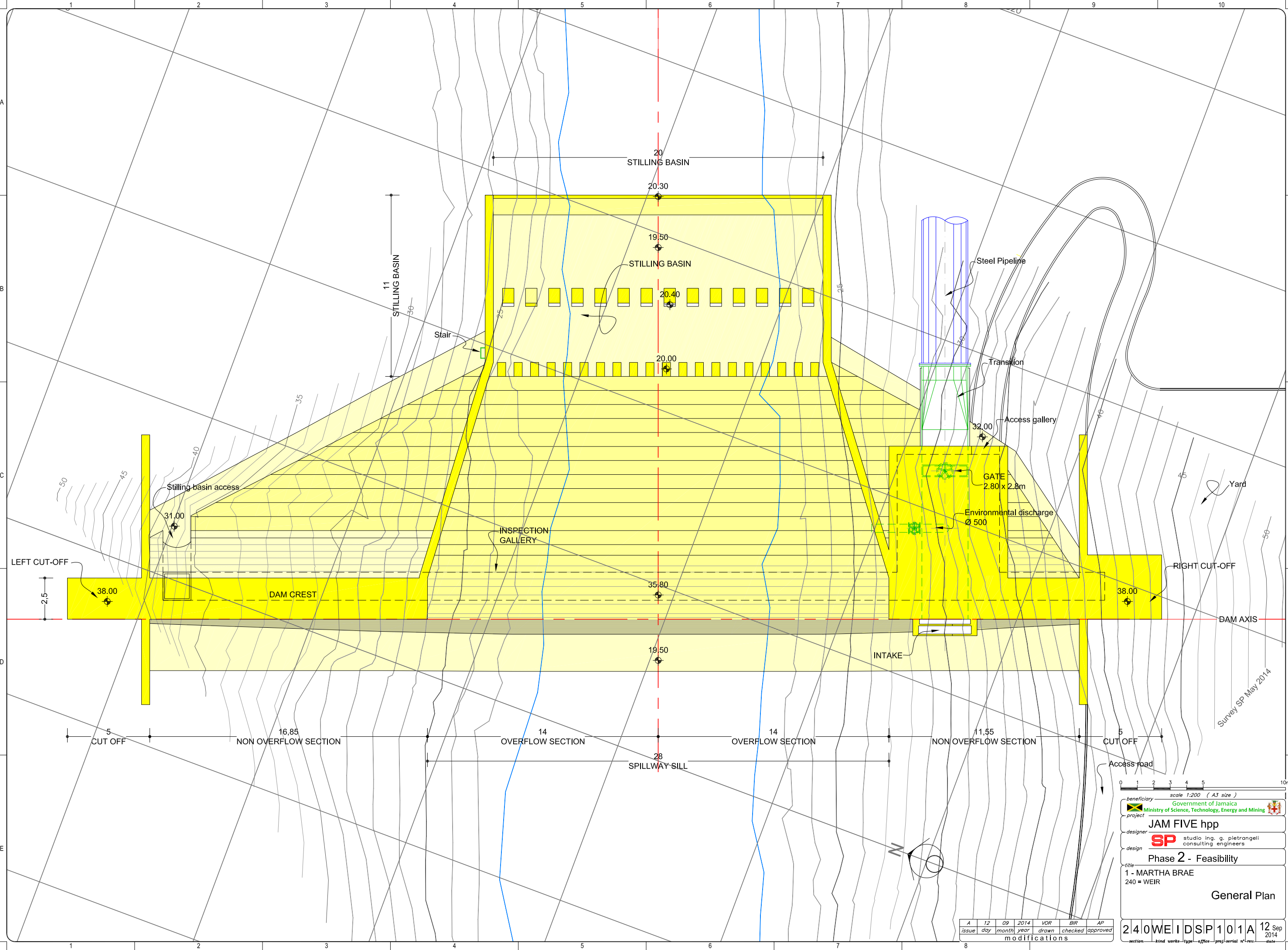


THIS DRAWING IS PROPERTY OF SP AND MAY NOT BE REPRODUCED OR RELEASED TO THIRD PARTIES WITHOUT WRITTEN AUTHORIZATION

Z:\JAMAICA\_FIVE hpp\200 FEASIBILITY\240 WEIR\240 WEIR D SP 101-2-2-3-4 A Martha Brae\_Weir 140912 var.dwg ver. sp - Roma 18/SEP/2014 11:50:59



beneficiary: Government of Jamaica  
 project: Ministry of Science, Technology, Energy and Mining  
 designer: SP studio ing. g. pietrangeli consulting engineers  
 design: Phase 2 - Feasibility  
 title: 1 - MARTHA BRAE 240 = WEIR

General Plan

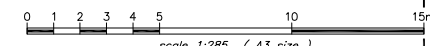
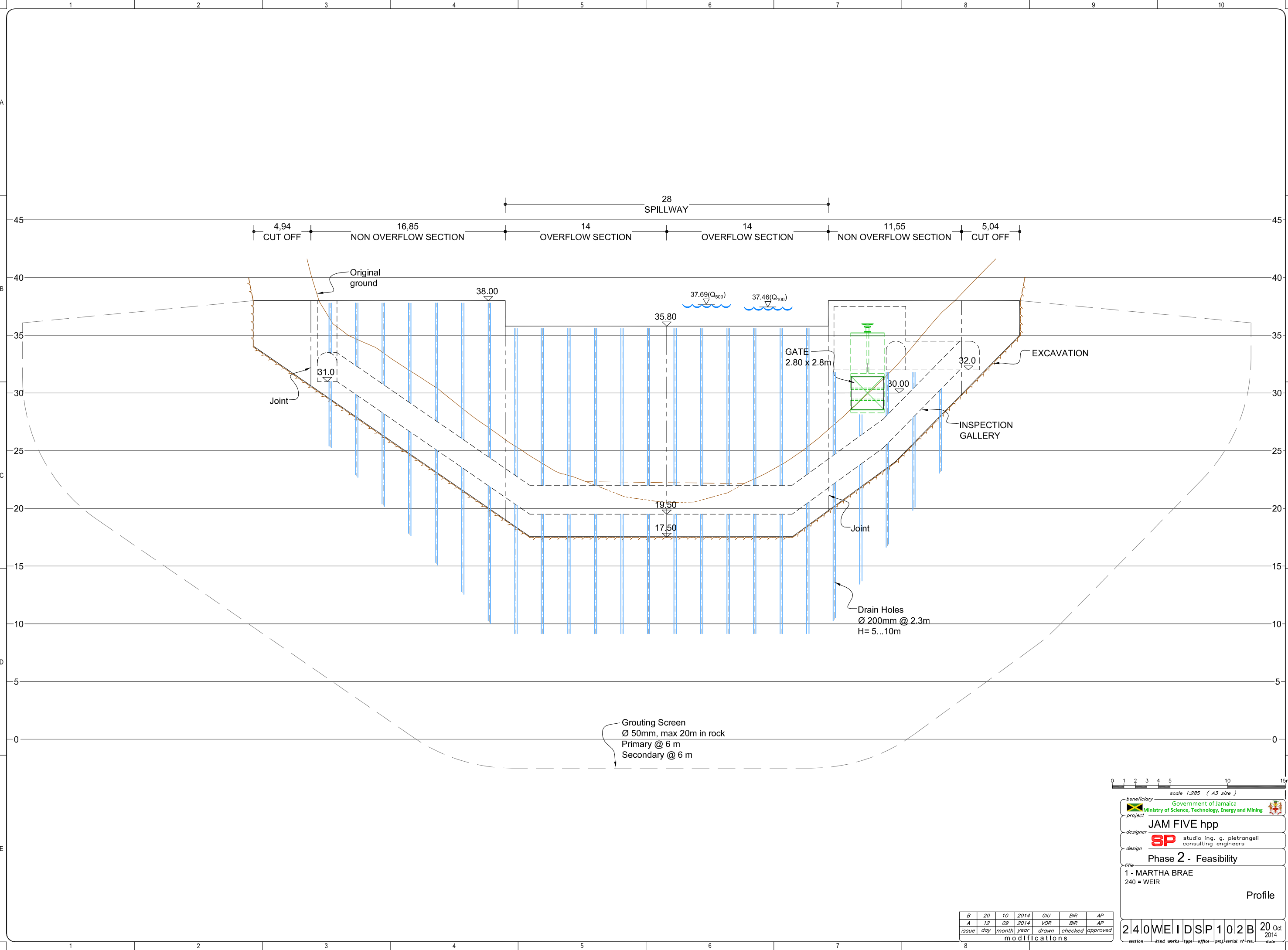
issue	day	month	year	drawn	checked	approved	modifications
A	12	09	2014	VOR	BIR	AP	

240WEIRDSP101A 12 Sep 2014

Survey SP May 2014

THIS DRAWING IS PROPERTY OF SP AND MAY NOT BE REPRODUCED OR RELEASED TO THIRD PARTIES WITHOUT WRITTEN AUTHORIZATION

Z:\JAMAICA\FIVE hpp\200 - FEASIBILITY\240 WEIR\240 WEIR D SP 101A-102B-103B-104B Martha Brae\_Weir\_141021.dwg ghu, sp - Roma 21/OCT/2014 14:25:16



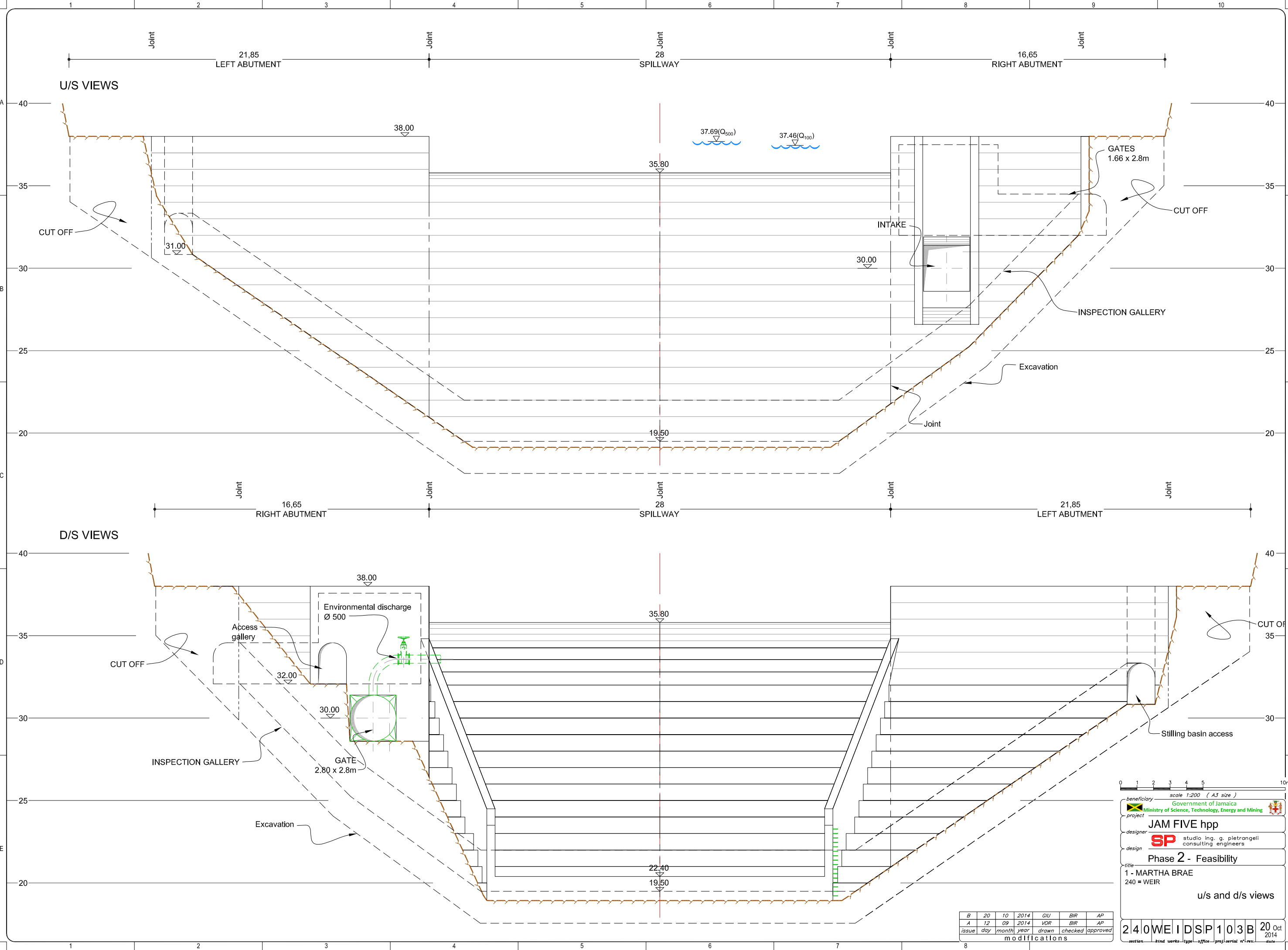
beneficiary	Government of Jamaica	
project	Ministry of Science, Technology, Energy and Mining	
designer	JAM FIVE hpp	
design	SP studio ing. g. pietrangeli consulting engineers	
title	Phase 2 - Feasibility	
	1 - MARTHA BRAE	
	240 = WEIR	
	Profile	

B	20	10	2014	GHU	BIR	AP
A	12	09	2014	VOR	BIR	AP
issue	day	month	year	drawn	checked	approved
240WEIR D SP 101A-102B-103B-104B Martha Brae_Weir_141021.dwg						
modifications						

240WEIR D SP 101A-102B-103B-104B Martha Brae\_Weir\_141021.dwg Oct 20 2014

THIS DRAWING IS PROPERTY OF SP AND MAY NOT BE REPRODUCED OR RELEASED TO THIRD PARTIES WITHOUT WRITTEN AUTHORIZATION

Z:\JAMAICA\FIVE hpp\200 - FEASIBILITY\240 WEIR\240 WEIR D SP 101A-102B-103B-104B Martha Brae\_Weir\_141021.dwg ghu, sp - Roma 21/OCT/2014 14:29:00



0 1 2 3 4 5 10m  
scale 1:200 (A3 size)

beneficiary: Government of Jamaica  
 project: Ministry of Science, Technology, Energy and Mining  
 designer: JAM FIVE hpp  
 design: SP studio ing. g. pietrangeli consulting engineers  
 title: Phase 2 - Feasibility  
 1 - MARTHA BRAE  
 240 = WEIR  
 u/s and d/s views

B	20	10	2014	GIU	BIR	AP
A	12	09	2014	VOR	BIR	AP
issue	day	month	year	drawn	checked	approved

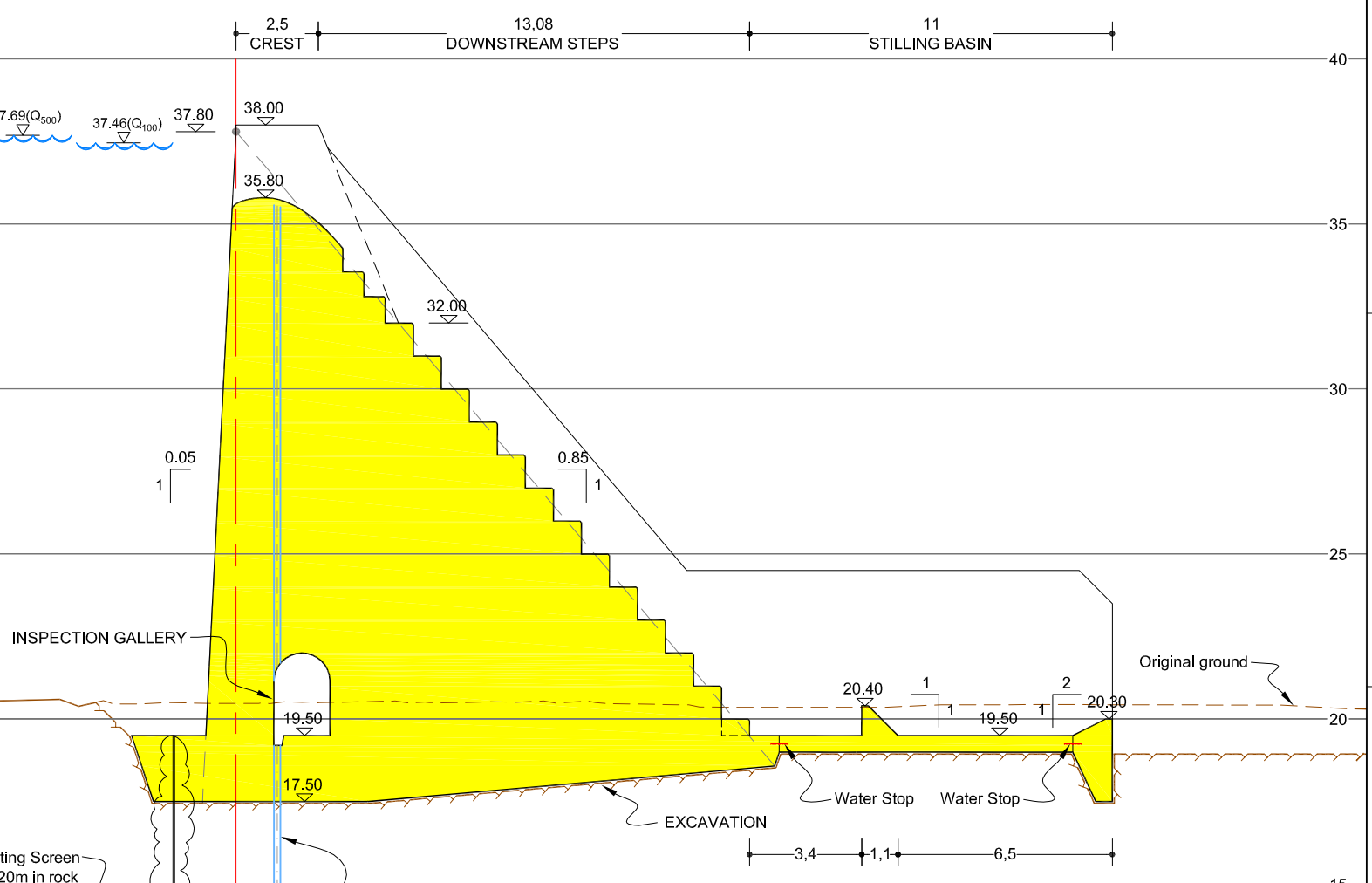
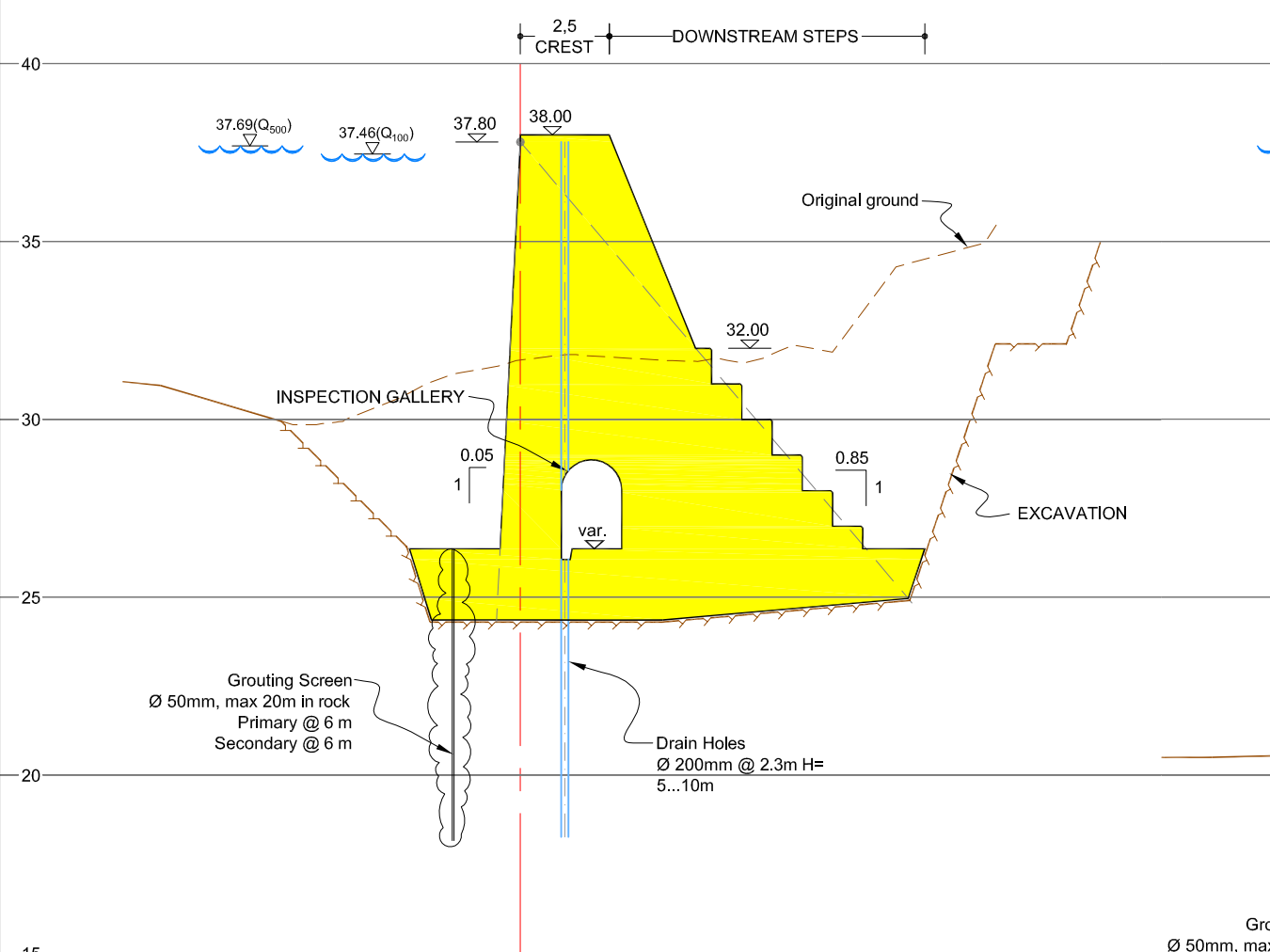
240WEIRDSP103B 20 Oct 2014  
 modifications

THIS DRAWING IS PROPERTY OF SP AND MAY NOT BE REPRODUCED OR RELEASED TO THIRD PARTIES WITHOUT WRITTEN AUTHORIZATION

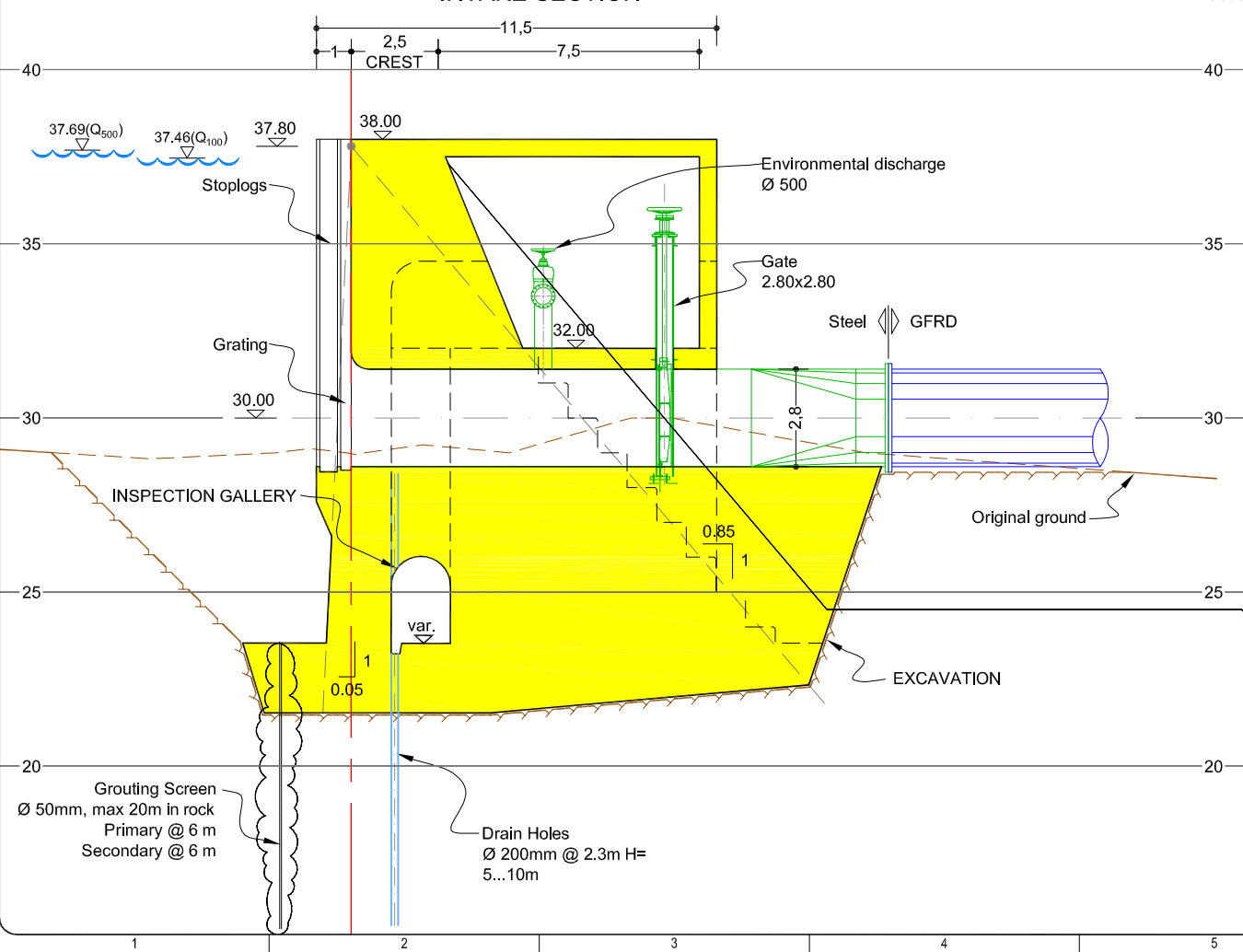
Z:\JAMAICA FIVE hpp\200 - FEASIBILITY\240 WEIR D SP 101A-102B-103B-104B Martha Brae\_Weir\_141021.dwg ghu, sp - Roma 21/OCT/2014 14:30:12

**NON OVERFLOW TYPICAL SECTION**

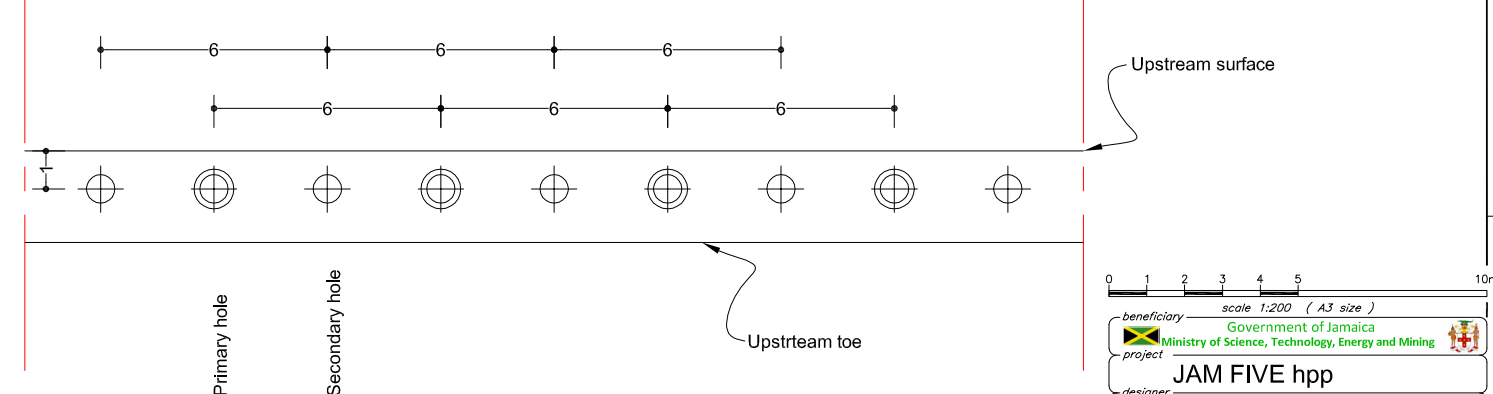
**OVERFLOW TYPICAL SECTION**



**INTAKE SECTION**



**GROUTING SCHEME**



Scale 1:200 (A3 size)

beneficiary: Government of Jamaica  
 project: Ministry of Science, Technology, Energy and Mining  
 designer: JAM FIVE hpp  
 design: SP studio ing. g. pietrangeli consulting engineers  
 title: Phase 2 - Feasibility  
 1 - MARTHA BRAE  
 240 = WEIR  
 Sections and details

B	20	10	2014	GIU	BIR	AP
A	12	09	2014	VOR	BIR	AP
issue		day	month	year	drawn	checked
240WEIR		IDSP104B		20	Oct	2014
section		stud	works	type	office	proj